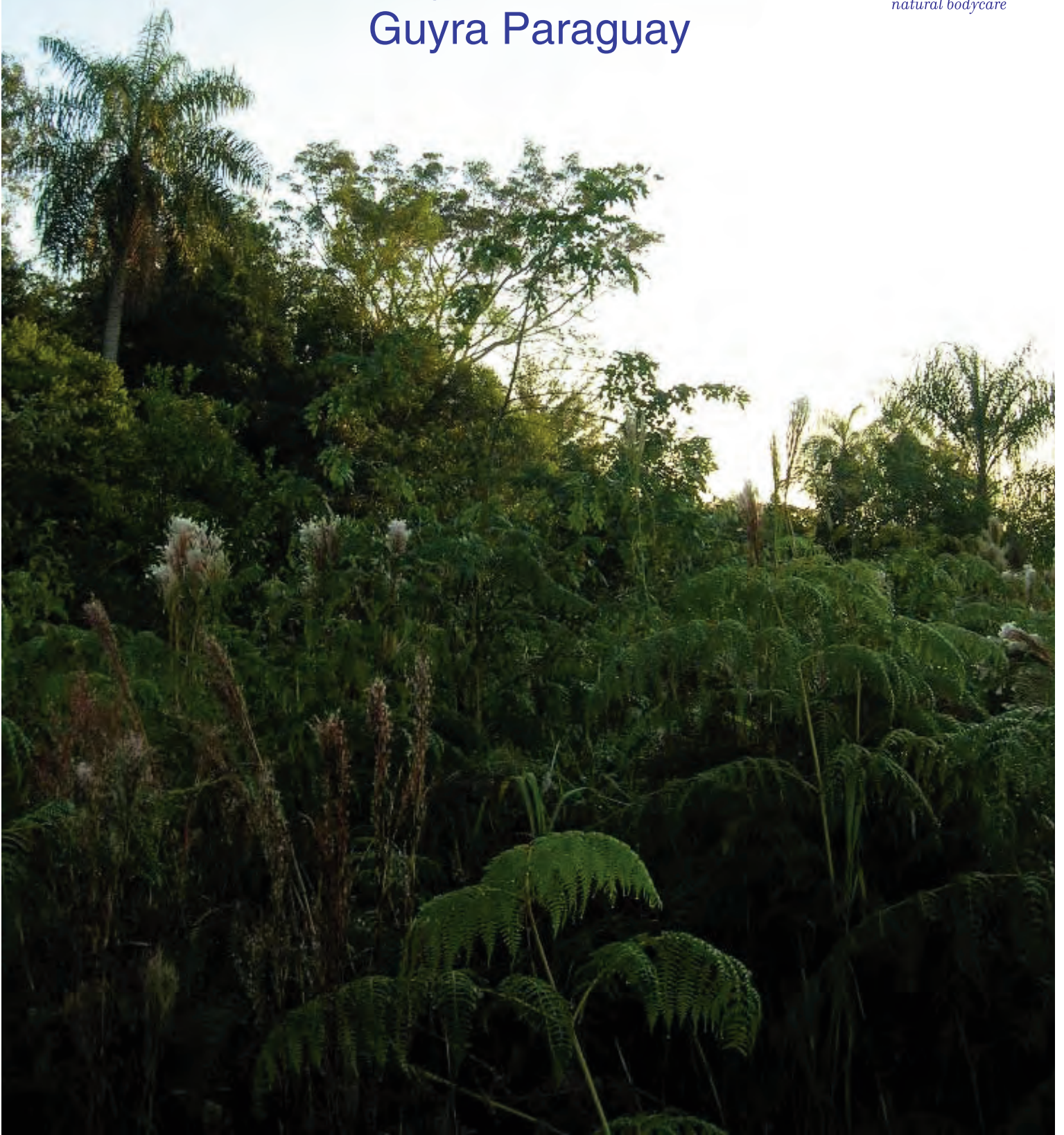




Report for derma e® Summary of Activities 2009 Guyra Paraguay



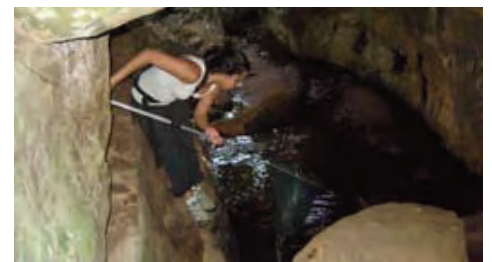


Report for derma e®
Summary of Activities 2009

Program

Focus on Species

- Conducted Christmas Count 2009 in Bay of Asuncion and Ñu Guasú park.
- Conducted the Neotropical Census of Aquatic Birds 2009: a count of migratory and threatened species in the eastern and western regions.
- The Fish Biodiversity Project of the La Plata River Basin: Conducted a workshop on fisheries legislation and biological monitoring.
- Monitored migratory species in three sites.
- Conducted a series of conferences that marked the 200th birthday of Charles Darwin.
- Worked as part of the Alliances for the Southern Cone Grassland Conservation with Birdlife International and other organizations.
- Conducted biological monitoring in Property 470, the Reservation of the Aché (an indigenous group in Paraguay).
- Conducted surveys of biological data in the Alto Chaco (a region of Paraguay).
- Organized and acquired teams/equipment for a workshop on bats.
- Prepared a report on populations of migratory and dynamic species of the Rio Negro (Black River) in the Pantanal.
- Conducted a biological characterization of the grasslands in Misiones (a department in Paraguay).
- Completed the design and layout of the book, *Birds Nests and Eggs of Paraguay*.



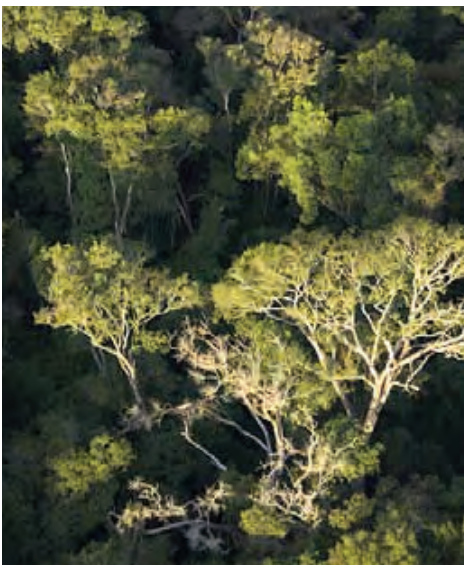


Report for derma e®
Summary of Activities 2009

Program
Focus on Sites/Locations

- Ongoing biological monitoring and forest restoration in San Rafael as well as monthly trips to monitor, control and clean up sites in San Rafael.
- Repaired and improved the biological station, Los Tres Gigantes (The Three Giants).
- Held work meetings under the shared management of 3PN-SEAM/WLT/GP (3 National Parks and the Secretary of the Environment/The Wildlife Land Trust/Guyra Paraguay).
- Planned management of Property 470 through monthly trips and meetings with the community leaders of the indigenous people, the Aché.
- Constructed housing at biological stations, Los Tres Gigantes and Kanguery.
- Coordination and support of technical visits from US Geological Survey, Wildlife Land Trust and US Forest Service.
- Constructed a Visitor's Center on the campus of Radio Bahía Negra Poty.
- Monitored IBA's (Important Bird Areas).
- Trained staff at the biological station, Los Tres Gigantes.
- Made technical trips under the framework of the shared management of the three national parks.
- Contracted 5 park guards to manage Defensores del Chaco National Park.
- Launched a plan for management for the National Park, Defensores del Chaco.
- Published and promoted a book about the important bird areas of Paraguay titled *57 Important Areas for Bird Conservation*.





Report for derma e®
Summary of Activities 2009

Program

Focus on Land and Land Use



- Responsible Soy Initiative: Provided support for small soy producers and organized training workshops.
- Worked with over 100 small farmers to help them produce more than 500 tons of organic products and to increase the price of their products by at least 20%.
- Prepared final report: *Evaluation of the Impact of Biofuels on the Socio-environmental Matrix of Paraguay.*
- Rapid Land Cover Classification - United States Geological Survey.
- Monthly monitoring of the Pilcomayo River.
- Monitored changes in the use of land all over the country. Alerted others about desertification, floods and fires.
- Supported the organization of workshops regarding fire management in Paraguay.
- Restored landscape in San Rafael.
- Signed memorandum of understanding with the University of Manitoba.
- Conducted an experiential workshop on forest plantations with rural women in Latin America.
- Completed the classification of land use and ground cover for Paraguay through the methodology of points on satellite images.
- Provided technical and logistical support to the campaign, Paraguay Breathes with All its Lungs, with the objective of planting 14,000,000 trees in the eastern region of Paraguay.
- Technical support for governmental organizations such as the Secretary of the Environment and Prosecutor of the Environment.
- Participated in discussions as part of the Round Table for Responsible Soy.



Report for derma e®
Summary of Activities 2009

Program
Focus on Population and Environmental Education/Communication

- Created a visual image for the “Sustainable Bahia Negra Project” (Bahía Negra, a locality in the Pantanal).
- Performed maintenance of the infrastructure of the Radio Bahia Negra Poty (Bahía Negra, a locality in the Pantanal).
- Participated in the greening of the avenue of Bahía Negra by planting trees.
- Campaign for the Pride of the Pantanal: Preparation of the Environmental Calendar of the Pantanal.
- Created new web page design.
- Prepared and mailed 6 volumes of the Urutau Electronico, an electronic newsletter.
- Exhibited photography of the Paraguayan Pantanal in the Citibank Cultural Center.
- Signed an agreement with the University of America for internships for students in tourism and hospitality careers.
- Conducted lectures at high schools for Earth Day.
- Organized activities for World Environment Day and participated in a photography exposition of San Rafael in the Citibank Cultural Center.
- Created materials for environmental education and communication.
- Produced a weekly bulletin of bio-news.
- Made press appearances discussing environmental news about Paraguay (the deforestation, drought, fires, and others).



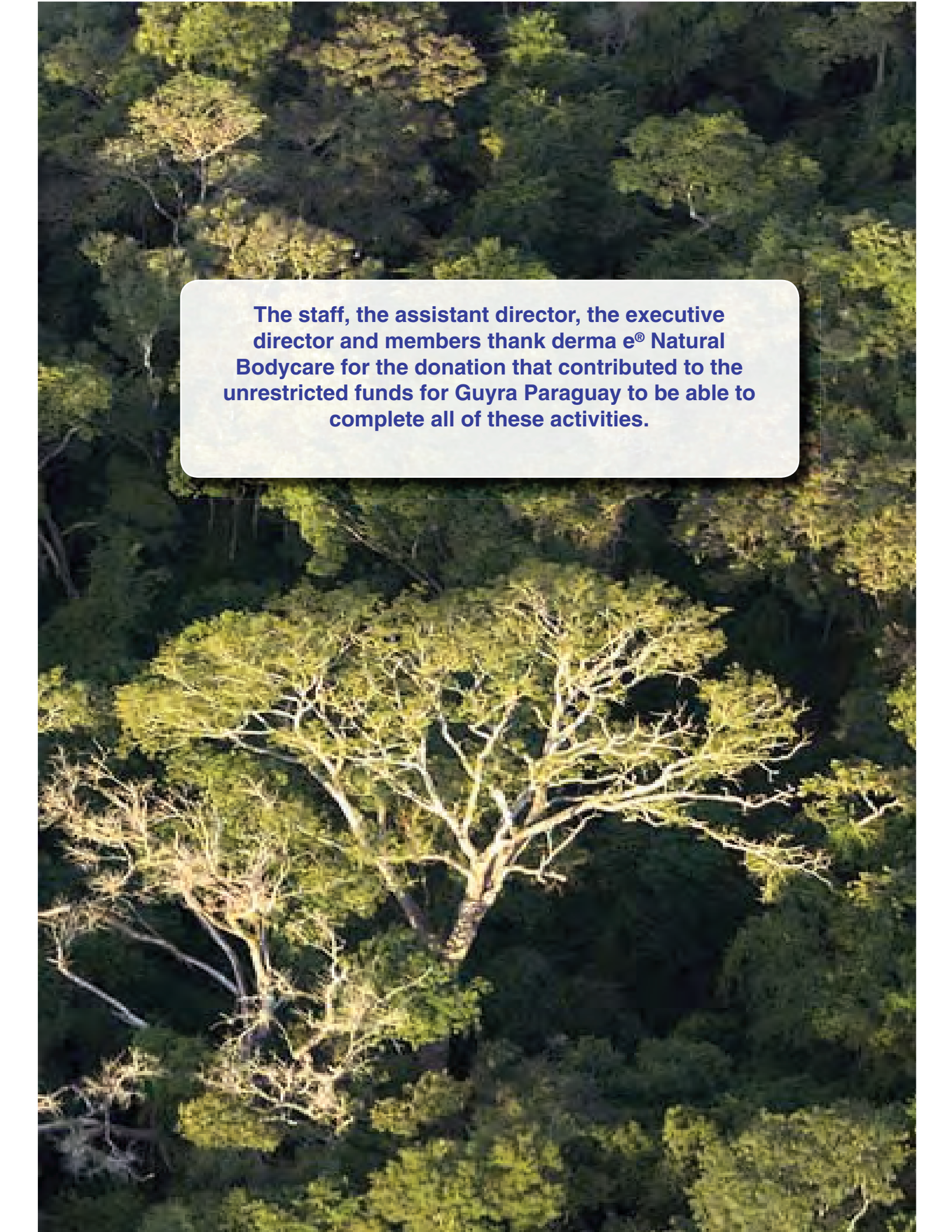


Report for derma e®
Summary of Activities 2009

Program
Institutional Development

- Staff: 29
- Internal consultants: 19
- Outside consultants: 9
- Interns: 3
- Volunteers: 2
- Funds secured so far: \$626,273
- Available funds: \$260,190
- New donors and partners: Nature Canada, The Nature Conservancy, US Forest Service, IUCN South (International Union for the Conservation of Nature), The Food, Water and Energy Company.
- Leadership and participation in national alliances: Alliance for Sustainable Development, AVINA (a not-for-profit organization dedication to sustainable development in Latin America), Alliance for the Conservation of San Rafael, Project Yaguareté.
- Leadership and Participation in International Alliances: WCC (waterbird conservation council), WHMSI (Western Hemisphere Migratory Species Initiative), WHSRN (Western Hemisphere Shorebird Reserve Network), BirdLife International, WLT (World Land Trust).



An aerial photograph of a dense forest. The trees are mostly green, but a large, prominent tree in the center has a thick, gnarled trunk and a wide, spreading canopy of lighter green leaves. The forest floor is visible through the canopy, showing a mix of green and brown. The overall scene is a lush, natural environment.

The staff, the assistant director, the executive director and members thank derma e® Natural Bodycare for the donation that contributed to the unrestricted funds for Guyra Paraguay to be able to complete all of these activities.